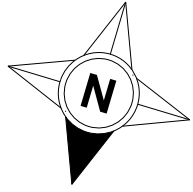


The Old Barn, Tregaddock, St. Mabyn, Bodmin, PL30 3DE



Approximate Area = 1627 sq ft / 151.2 sq m

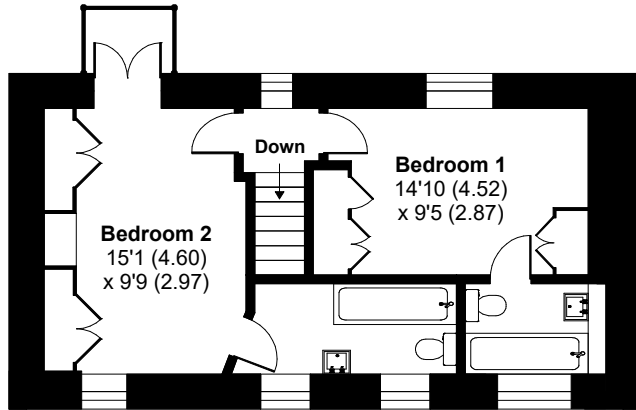
Garage = 343 sq ft / 31.9 sq m

Annex = 561 sq ft / 52.1 sq m

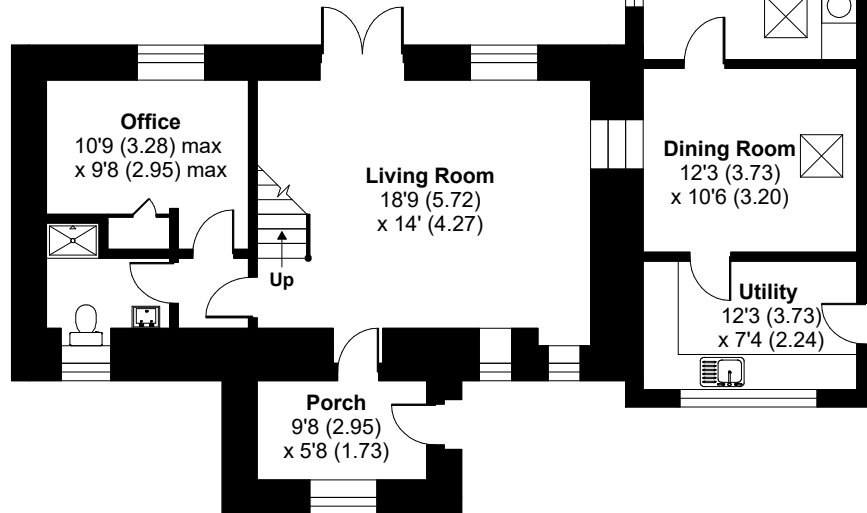
Outbuilding = 530 sq ft / 49.2 sq m

Total = 3061 sq ft / 284.4 sq m

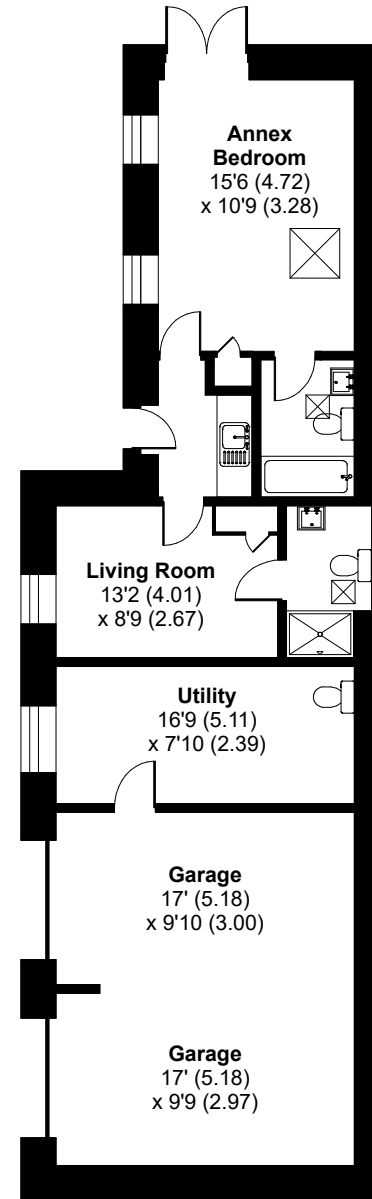
For identification only - Not to scale



FIRST FLOOR



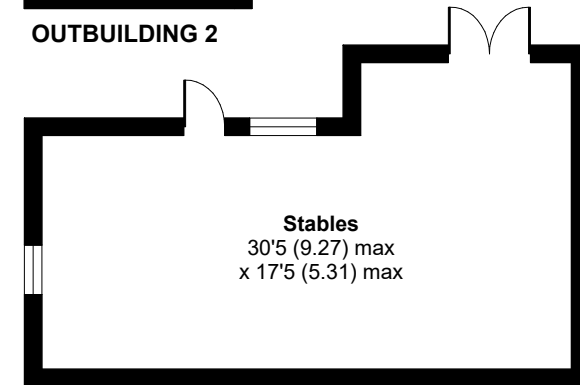
GROUND FLOOR



ANNEX



OUTBUILDING 2



OUTBUILDING 1

